

CERTIFICATE OF LOCATION OF GOVERNMENT CORNER

NORTHEAST Corner of Section 32, Township 108N, Range 39W

5th Principal Meridian, State of Minnesota, County of MURRAY

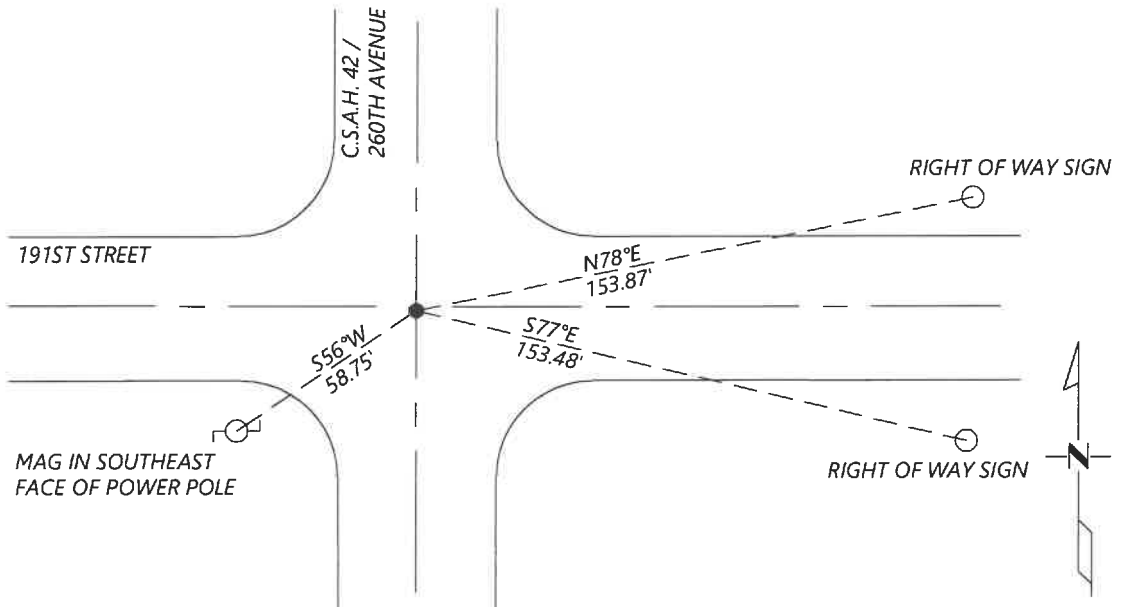
At the corner location shown on the sketch:

On 8/27/2020 found a NO. 4 REBAR WITHOUT CAP, FLUSH WITH ASPHALT
DATE

left monument as found lowered monument removed monument (explain)

On _____ placed a _____
DATE

SKETCH OF REFERENCE TIES



N.T.S.

Statement of evidence for this corner location is on back of this page.

I hereby certify that this document was researched and prepared by me or under my direct supervision and that I am a licensed Land Surveyor under the laws of the State of Minnesota.

Signature [Handwritten Signature]

Date 6/17/2021 License No. 45874

Title:

- Land Surveyor Professional Engineer
- County Surveyor County Engineer

OFFICE OF THE COUNTY RECORDER

County of Murray

I hereby certify that this document was filed in the Co.

Recorder's office at _____ M. on the _____ day of _____ A.D. 20_____

County Recorder [Handwritten Signature: Karen Brown]
by JUN 22 2021, Deputy

DOCUMENT NO. _____

Statement of Evidence:

Northeast Corner of Section 32, Township 108 North, Range 39 West, 5th Principal Meridian, Murray County, Minnesota.

No GLO Notes.

N/A Survey record for Section 33 shows that the government corner was found. Shows a distance of 2634.7ft to the North Quarter corner and 2648.0ft to the West Quarter corner.

1978 April, Highway department records show that a 6x6x6 ft hole was excavated with a backhoe and found nothing.

1999 May, CSAH 42 plans show the corner at PI station 8+047.191

2000 March, Highway Department records show they placed a $\frac{3}{8}$ " rebar (assumed) before gravel and bituminous were laid.
Nail & cap in PP SW 57.47ft
Nails W 155.0ft, 250.0ft, 346.0ft

2017 May, Highway Department records show that they located a No. 4 rebar. Coordinates are as follows:
N: 200432.94 E: 558723.85

2020 September, Westwood Professional Services searched and found a $\frac{1}{2}$ " rebar. Location fits coordinates reported by Highway Department in 2017. I accepted the found monument and set reference ties.

Analysis of the recovered data, field evidence and survey measurements, indicates that the monument found is the correct perpetuation of this corner. For additional information concerning this corner please contact Westwood Professional Services.